

Electrojumble.org.uk

FILAMENT TRANSFORMERS

Our "Hygrade", "Standard" and C.R.T. Filament Transformers are provided with primaries tapped at 205 V, 225 V and 245 V for 50/60 cycle mains. They are of "Clamp" Construction, with vacuum varnish impregnation. Connections brought to solder tags on an insulated panel. For description of "Heavy-Duty" type see below.

"HEAVY-DUTY" TYPE57/6 each

H/D. Filament Trans.

Fully shrouded and vacuum varnish impregnated (Tropicalized). All connections to "Turret" tags on high grade laminated panel. Similar appearance to our H.T. Transformer (Style B, page 26).

Primary: 10-5-0-115-205-225-245 V, 50/60 cycles. Screened.

Secondaries: 5 V, 3 A; 6.3 V, 5 A C.T.; 6.3 V, 5 A C.T.

Dimensions: W. 3.5" H. 4.25" D. 3.12" FC. 2.62" x 2.37" WT. 6½ lb.

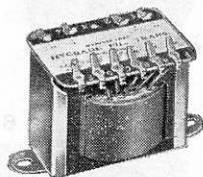
"HYGRADE" TYPE17/- each

Hygrade Fil. Trans.

Illustrated on right. Primaries screened. Supplied in the following Secondary ratings only.

6.3 V. Two windings, each rated at 6.3 V, 1.8 A.

Dimensions: W. 2.62" H. 2.37" D. 1.93" FC. 3.32" WT. 1 lb. 13 oz.



"STANDARD" TYPES8/9 each

Std. Fil. Trans. (+ Voltage)

6.3 V at 1 A C.T. 13 V at .5 A C.T.

16.3 V at .3 A C.T.

Dimensions: W. 2.12" H. 1.75" D. 1.62" FC. 2.5" WT. 13 oz.

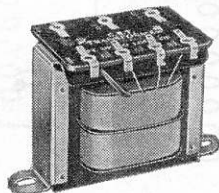
C.R.T. TRANSFORMERS15/- each

C.R.T. Trans. (+ Voltage)

Specially designed to deal with Heater/Cathode Shorts in C.R.T.'s. Sectionalized windings to give average capacity between windings of 25 pF. All types have a +20% "Boost" Tapping.

6.3 V at 1 A. 13.3 V at .6 A.

Dimensions: W. 2.32" H. 2.05" D. 1.81" FC. 2.75" WT. 1 lb. 2 oz.



UNIVERSAL L.T. TRANSFORMERS84/- each

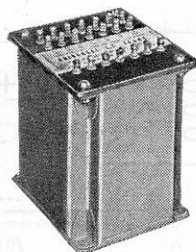
Universal L.T. Trans.

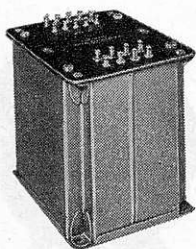
Fully shrouded "potted" construction. All connections to "turret" tags on high grade laminated panel. Vacuum varnish impregnated. Total load not to exceed 90 watts. "Start" and "Finish" of windings indicated to permit correct series and parallel connections, providing voltage from 1-40 V, in 1 V steps.

Primary: 10-5-0-200-220-240 V, 50/60 c/s, screened.

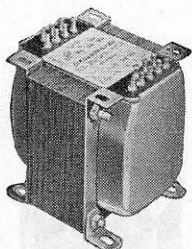
Secondaries: 1 V, 9A; 2 V, 9 A; 2 V, 9A; 5 V, 9 A; 10 V, 3 A; 10 V, 3 A; 10 V, 4.5 A.

Dimensions: W. 4.25" H. 4.75" D. 3.62" FC 3.62" x 2.87" WT. 7 lb.

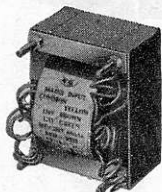




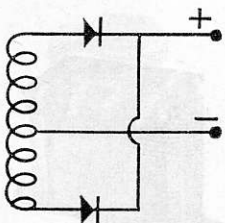
A



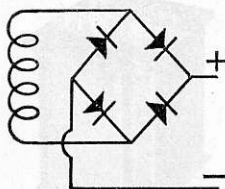
B



D



(1)



(2)

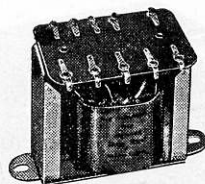
PRIMARY (a)	SECONDARIES (b)
10-5-0-115-200-220-240 V	425-350-0-350-425 V, r.m.s., 200 mA d.c. (1) 6.3 V, 3 A C.T.; 6.3 V, 3 A C.T.; 5 V, 3 A
10-5-0-115-200-220-240 V	350-300-250-0-250-300-350 V, r.m.s. 150 mA d.c. (1)
0-100-115-125 V (d)	350-0-350 V, r.m.s. 150 mA d.c. (1)
0-205-225-245 V (d)	6.3 V, 3 A C.T.; 6.3 V, 2.5 A C.T.; 0.5 V, 3.5 A-6.3 V, 2 A
0-100-115-125 V (d)	300-0-300 V, r.m.s. 120 mA d.c. (1)
0-205-225-245 V (d)	6.3 V, 3 A C.T. 0.5 V, 2 A-6.3 V, 1 A
0-100-115-125 V (d)	275-0-275 V, r.m.s. 100 mA d.c. (1)
0-205-225-245 V (d)	6.3 V, 2.5 A 0.5 V, 2 A-6.3 V, 1 A
0-100-115-125 V (d)	250-0-250 V, r.m.s. 75 mA d.c. (1)
0-205-225-245 V	6.3 V, 2 A 0.5 V, 2 A-6.3 V, 1 A
0-100-115-205-225-245 V (d)	0-250 V, r.m.s. 75 mA d.c. (2)
	6.3 V, 3 A C.T.
0-110-125 V	0-250 V, r.m.s. 60 mA d.c. (2)
0-205-225-245 V	6.3 V, 2 A
0-100-115-125 V	0-250 V, r.m.s. 25 mA d.c. (3)
0-205-225-245 V	(or with C.T. 50 mA (1)) 6.3 V, 1.2 A
0-115-205-225-245 V	0-45-50 V, r.m.s.; 0-45-50 V, r.m.s. 0.9 A d.c. at 50-0-50 V (4)
0-115-205-225-245 V	0-25-30 V, r.m.s.; 0-25-30 V, r.m.s. 1.5 A d.c. at 30-0-30 V (4)
0-100-115-205-225-245 V (d)	0-27 V, r.m.s. C.T. 3 A d.c. (2)
0-205-225-245 V	20-12-0-12-20 V, r.m.s. 0.7 A d.c. (1)
0-115-205-225-245 V	0-12-15-18 V, r.m.s. 2.5 A d.c. (2)

NOTES: (a) All Primaries are screened except on Midget Mains types. All Primaries are suitable for 50/60 c/s operation.

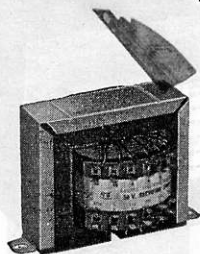
(b) All d.c. current ratings relate to use with capacitor-input filters (smoothing circuits). The figure in parenthesis refers to appropriate connection diagram in margins. These diagrams indicate the external rectifier circuit to which the ratings apply.

Electrojumble.org.uk

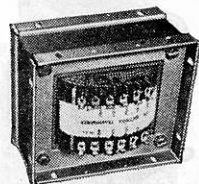
STYLE (c)	DIMENSIONS (as illustrated)	WT. lbs.	ORDER AS:—	PRICE EACH
A	W. 5·5", D. 4·5", H. 5·85", FC. 4·62" × 3·62" 2BA.CL.	16	De Luxe Mains Trans.	107/6
B	W. 3·6", H. 4·35", D. 3·12", FC. 2·3" × 2·7" 2BA.CL.	6 $\frac{3}{4}$	H.T. Trans.	60/6
G (e)	W. 4·7", H. 4", D. 3·6", FC. 2·15" × 3·3", 2BA.CL.	8	H/D Mains Tr. 125 V	56/—
			H/D Mains Tr. 250 V	55/6
G	W. 3·9", H. 3·3", D. 3·7", FC. 2·35" × 2·7" 2BA.CL.	6 $\frac{1}{4}$	Hygrade Mains 125 V	43/6
			Hygrade Mains 250 V	43/—
G (e)	W. 3·95", H. 3·3", D. 3·3", FC. 2·7" × 2·1" 2BA.CL.	5 $\frac{1}{2}$	Std. Mains Tr. 125 V	35/6
			Std. Mains Tr. 250 V	35/—
G	W. 3·5", H. 3·0", D. 3·0", FC. 2·1" × 2·12" 4BA.CL.	3 $\frac{1}{2}$	Economy Mains 125 V	28/—
			Economy Mains 250 V	27/6
G	W. 3·5", H. 3", D. 3", FC. 2·1" × 2·12" 2BA.CL.	4 $\frac{1}{8}$	Bridge Mains Trans.	28/6
D	W. 2·65", H. 2·18", D. 2·31", FC. 1·75" × 2·18" (drop through)	2	Continental Tr. 125 V	26/—
			Continental Tr. 250 V	25/6
E	W. 2·37", H. 2·06", D. 2·0", FC. 2·87" 2BA.CL.	1 $\frac{3}{8}$	Midget Mains 125 V	22/—
			Midget Mains 250 V	21/6
F	W. 3·87", H. 3·18", D. 2·8", FC. 4·35" 2BA.CL.	4 $\frac{1}{4}$	50 V Rec. Trans.	32/—
F	As above	4 $\frac{1}{4}$	30 V Rec. Trans.	31/6
G	W. 4·7", H. 4·0", D. 3·2", FC. 4 Hole—2BA.CL. 1·9" × 3·2" 2BA.C.L	9	27 V Rec Trans.	52/6
F	W. 2·75", H. 2·27", D. 2·3", FC. 3·25" 2BA.CL.	1 $\frac{5}{8}$	20 V Rec. Trans.	19/6
F	W. 3·87", H. 3·18", D. 2·6", FC. 4·35" 2BA.CL.	4 $\frac{1}{4}$	18 V Rec. Trans.	32/6



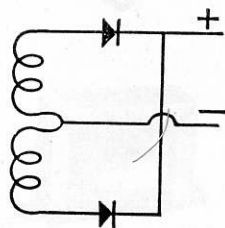
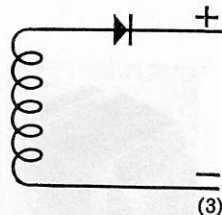
E



F



G



(c) All types are vacuum varnish impregnated.

(d) Primary taps adjusted on Voltage Selector Panel mounted on the shroud.

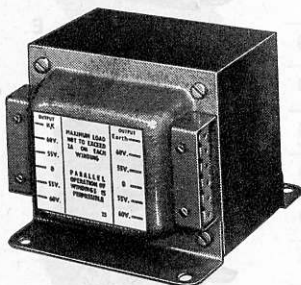
(e) 125 V type may be delivered with Voltage Selector Panel and altered fixing centres.

Electrojumble.org.uk

SAFETY ISOLATING TRANSFORMERS

Double-wound transformers with screened primary windings. Vacuum varnish impregnated. Fully shrouded construction with connections to protected terminal blocks. All types are for operation on 50/60 c/s mains.

NOTE: These transformers are constructed and tested to exacting standards so as to afford a high degree of protection to the user. Nevertheless, in the interests of maximum safety, only one piece of equipment to be isolated should be connected at a time to any one transformer.



500 W**225/- each**
Isolating Trans. 500 W.

For isolating larger equipment on test and also portable equipment. Input: 10-5-0-200-220-240 V Output: Two windings each providing 60-55-0-55-60 V at 250 VA loadings which may be connected to provide outputs of 110-120 V, or 220-240 V at 500 VA. These windings may be series or parallel connected.
Dimensions: W. 5.5" D. 6" H. 4.5" FC. 4.375" x 5.25" WT. 20½ lb.

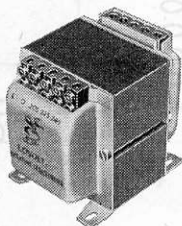


200 W**106/6 each**
Isolating Trans. 200 W.

For isolating a.c./d.c. equipment on test bench. Gives 1:1 ratio at full load for inputs in range 200-250 V. Windings are not tapped.
Dimensions: W. 4" H. 4.75" D. 4.5" FC. 3.5" x 3.31" WT. 12½ lb.

75 W**45/6 each**
Isolating Trans. 75 W.

For isolating smaller a.c./d.c. equipment on test and radios when recording broadcasts, etc. Gives 1:1 ratio at full load for inputs in range 200-250 V. Windings are not tapped. Appearance similar to "Lovolt" type below.
Dimensions: W. 3.35" H. 4" D. 3.80" FC. 2.75" x 2.35" WT. 6½ lb.



"LOVOLT"**57/6 each**
Lovolt Isol. Trans.

Primary tapped for 205 V, 225 V and 245 V mains. Two secondaries each provide 12 V, 4 A and may be series or parallel connected to provide 24 V, 4 A or 12 V, 8 A, respectively. Recommended for supplying low-voltage soldering irons and bench-lamps.
Dimensions: W. 3.37" H. 4.25" D. 4.4" FC. 2.875" x 2.75" WT. 7½ lb.

"440 V" (Industrial)**55/- each**
440 V. Isol. Trans.

For isolating and reducing the input voltage of test equipment, etc. Primary wound for 440 V single phase input with secondary voltages of 220 V or 240 V at 100 VA loading. The transformer may also be used with 240 V input giving a secondary voltage of some 115 V at 60 VA loading. Appearance similar to "Lovolt" type above.
Dimensions: W. 3.37" H. 4.25" D. 4.4" FC. 2.875" x 2.75" WT. 7½ lb.

Electrojumble.org.uk

AUTO TRANSFORMERS

(Watts) Auto Trans.

For step-up or step-down of mains voltages between 100, 110, 150, 200, 220, 240, 250 V at 50/60 c/s (except 50 W type below). These transformers all employ vacuum varnish impregnated windings.

NOTE: These components do not provide isolation from the mains.

1,000 W **197/6 each**
Fully shrouded construction with connections to protected terminal blocks.
Dimensions: W. 5.5" D. 5.75" H. 4.5" FC. 4.375" x 5.00" WT. 20 lb.

500 W **117/6 each**
Potted in steel case, with flexible input and output leads. Voltage selection by shockproof tapping panel.
Dimensions: W. 5.25" D. 4.25" H. 5.31" FC. 4.60" x 3.62" WT. 14½ lb.

250 W **.80/- each**
Construction as for 500 W type above.
Dimensions: W. 4.25" D. 3.62" H. 4.37" FC. 3.62" x 2.87" WT. 7½ lb.

150 W **.56/- each**
Construction as for 500 W type above.
Dimensions: W. 3.75" D. 3.12" H. 3.75" FC. 3.12" x 2.5" WT. 4½ lb.

100 W **.42/- each**
Construction and dimensions as for 150 W type above.

50 W **.23/- each**
Potted in steel case with flexible input and output leads. Voltage selection by shockproof tapping panels. Provides one fixed tapping of 115 V and adjustable tappings of 205 V, 225 V, 245 V.
Dimensions: W. 2.75" H. 2.75" D. 2.37" FC. 2.37" x 1.937" WT. 2½ lb.

L.F. (SMOOTHING) CHOKES

(Type +) Chokes (+ Inductance/Current)

Of "clamp" construction. Vacuum varnish impregnation. Connections by flexible leads. (To solder lugs in case of "midget" and tapped types.)

"HEAVY DUTY" **20/6 each**
3 H, 250 mA, 68Ω 10 H, 150 mA, 250Ω 20 H, 100 mA, 500Ω
Dimensions: W. 3.12" H. 2.62" D. 2" FC. 3.62" WT. 2½ lb.

"HYGRADE" **15/9 each**
10 H, 90 mA, 285Ω 20 H, 70 mA, 690Ω
Dimensions: W. 2.62" H. 2.25" D. 2.18" FC. 3.37" WT. 1½ lb.

"MIDGET" **6/9 each**
60 mH, 500 mA, 5.5Ω 5 H, 40 mA, 290Ω 10 H, 30 mA, 510Ω
Dimensions: W. 1.75" H. 1.5" D. 1.12" FC. 2.18" WT. 8 oz.

"TAPPED" **21/6 each**
Tapped Choke

May be used as smoothing choke in power supplies. Also suitable as output choke in transistor audio amplifiers, matching 60Ω to 3Ω or 15Ω. Uses special grain-orientated laminations

150 mH, 0.9A, 2.45Ω
Dimensions: W. 3.75" H. 3.25" D. 2.1" FC. 3.2" x 4 B.A. WT. 1½ lb.

